

# ObliMapper

## Push-Button Intelligence Platform

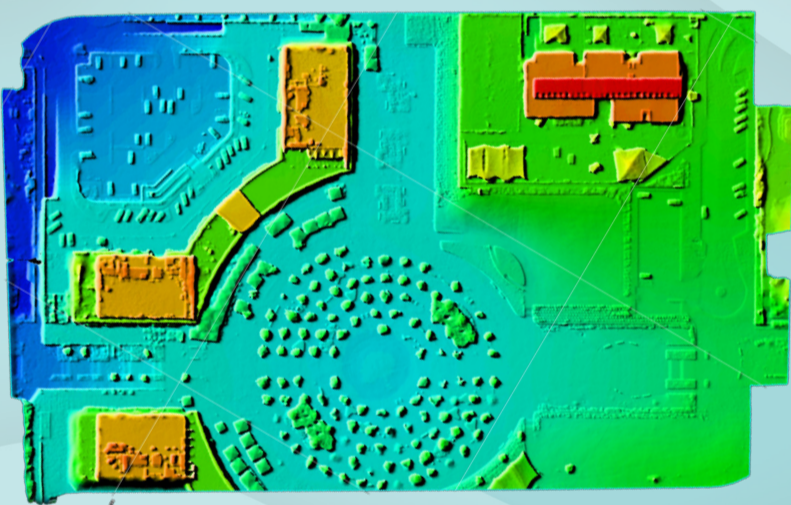
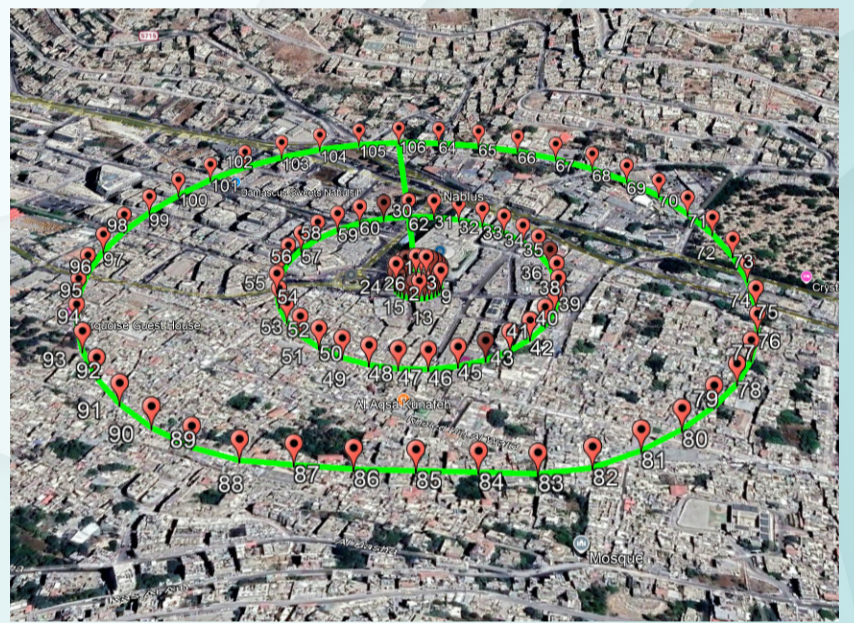


### Core Advantage: Fully Automated Simplicity

- Transform complex aerial intelligence gathering into simple button pushes
- Master the entire platform in minutes - no specialized training needed
- Get immediate results with fully automated processing
- Achieve professional-grade analysis with minimal user input

### Automated Flight Planning

One-click path generation and autonomous execution



### Automated 2D Analysis

- Digital surface model generation
- Automatic multi-angle viewing
- Push-button measurements and analysis including:
  - Terrain assessment
  - Contour mapping
  - Slope calculations
  - Traversability analysis
  - Visibility analysis
  - GIS data integration

### Automated 3D Analysis

- One-click 3D model creation
- Instant 3D visualization
- Automated measurements
- Push-button line-of-sight analysis
- Simple object annotation
- Multi-directional oblique imagery viewing



### Field-Proven Reliability

- 20 years of combat experience
- Works offline in operational environments
- Enhanced data security
- Compatible with off-the-shelf drones
- Proven in challenging combat conditions

### About Idan

A software development company since 1971, Idan pioneered oblique imaging technology and remains the trusted leader in advanced mapping and civil engineering solutions, serving government, military, law enforcement, and private sector organizations worldwide.

### Contact Information

Website: [www.idan.com](http://www.idan.com) | [aviv@idan.com](mailto:aviv@idan.com) | Phone: +972-54-334-5510